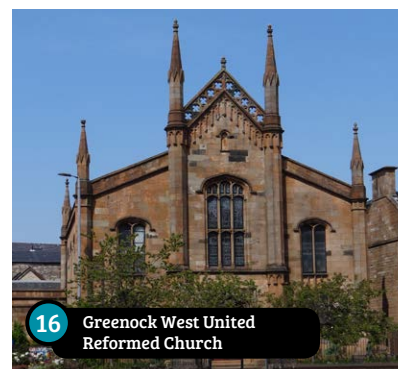


# Greenock InSpires

## CHURCH TRAIL

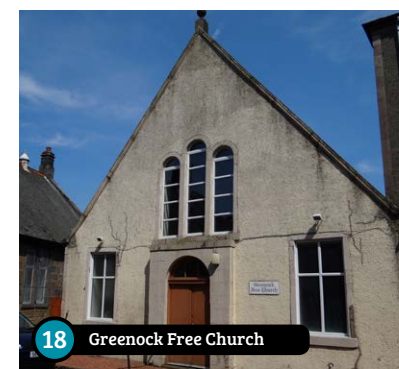
A CELEBRATION OF CHURCH HISTORY, HERITAGE AND PEOPLE

- 1 St. Columba's Gaelic Church
- 2 St. Mary's Church
- 3 Lyle Kirk – Esplanade Building
- 4 Lyle Kirk – Newark Street Building
- 5 The Church Of Jesus Christ Of Latter-Day Saints
- 6 Lyle Kirk – Union Street Building
- 7 Ardgowan Square Evangelical Church
- 8 Greenock Methodist Church
- 9 Cedar Hall, Church Of God
- 10 Westburn Church
- 11 Orangefield Baptist Church ( Now The Albany Arts Centre )
- 12 St. Patrick's Church
- 13 The Mount Kirk
- 14 St. George's North Church
- 15 George Square Baptist Church
- 16 Greenock West United Reformed Church
- 17 St. John's Episcopal Church
- 18 Greenock Free Church
- 19 Struthers Memorial Church
- 20 St. Andrew's Free Church ( Now Pyper's Furniture )
- 21 St. John's Masonic Temple
- 22 Cruden Gospel Hall
- 23 Wellpark Mid Kirk
- 24 Greenock Town Hall



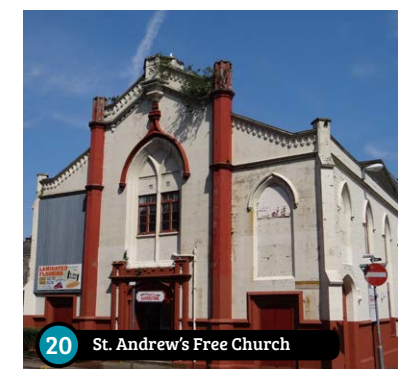
**16 Greenock West United Reformed Church**

George Square, PA15 1QP  
United Reformed -1839-40 John Baird. Formerly George Square Congregational. United with Nelson Street EU Congregational Church. Tudor Gothic rectangle with well detailed ashlar façade. Church has vaulted ceiling and fine stained glass windows. Also has pipe organ.



**18 Greenock Free Church**

14a, Jamaica Street, PA15 1XX  
Former Free Church -1844. Congregation left established church 1843 and held services in Duncan Street burial ground. Moved to St. Thomas 1910. Congregation now worship in Gaelic Free building behind St. John's. These two buildings are joined.



**20 St. Andrew's Free Church**

West Stewart Street, PA15 1SH  
Formerly United Free Church - 1835 John Henderson. Tudor Gothic building, costing £4000. In 1843 minister and congregation left Church of Scotland. 1879, new building (now demolished) erected and original bought by local grocer. Currently owned by furniture company. (Now Pyper's Furniture)



**21 St. John's Masonic Temple**

West Stewart Street, PA15 1SN  
Masonic Lodge - 1897 Boston Menzies and Morton Red sandstone (Skelmorlie quarry) building. Tablet outside commemorates laying of foundation stone. Past members' portraits inside. Interior has remained unchanged over the years. Lodge Greenock St. John's No 175 meets regularly here. Enter by Bubbly Jock Brae.



**23 Wellpark Mid Kirk**

Cathcart Square, PA15 1LS  
Church of Scotland - 1759 (refurbished 1878) James Ewing (interior). Handsome classical building with an Ionic portico and steeple modelled on St. Martin's in the Fields in London. Known as the 'Toon Kirk', as originally the minister's stipend was paid by Town Council. The seat at the front of the Gallery is reserved for the Provost. There are galleries on three sides of the interior which seats over 1000. Stained glass windows and several memorials and marbles are of interest. The Mid Kirk united with Wellpark West Church to become Wellpark Mid Kirk. [www.wellparkmidkirk.com](http://www.wellparkmidkirk.com)



**22 Cruden Gospel Hall**

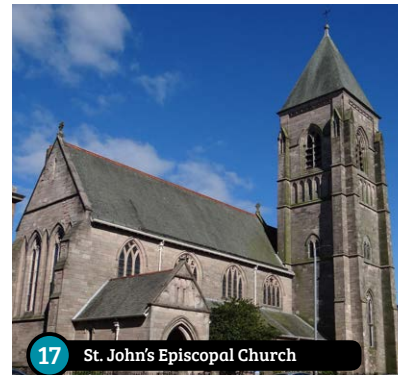
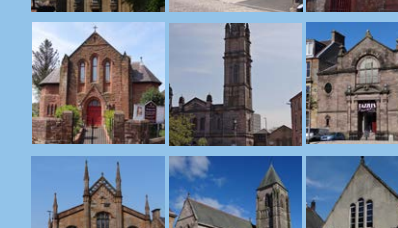
Ann Street, PA15 4RQ  
Previously Gospel Hall - 1888 architect unknown. Public Hall, capacity 300. Has been dance hall (late 19th century), cinema (1911-1930) and a Gospel Hall (1950s-1970s). Currently a venue for weddings and other private functions. [www.crudenhall.co.uk](http://www.crudenhall.co.uk)



**24 Greenock Town Hall**

Clyde Square, PA15 1LY  
1879-1886 H. & D. Barclay. Used as a church when required, particularly for large celebratory or commemorative services. Part of Municipal Buildings. Three small towers and the Victoria Tower (245 feet high). Town Hall, seats 1000 on three levels and occupies ground floor.

This is a self guided heritage walking trail of churches of central Greenock. It is not totally comprehensive. Some of the buildings may be open to the public. More information about each building can be found on its website. Further information on buildings etc. is available from the drop down menu 'What's in Inverclyde' at [www.inverclydetouristgroup.co.uk](http://www.inverclydetouristgroup.co.uk)



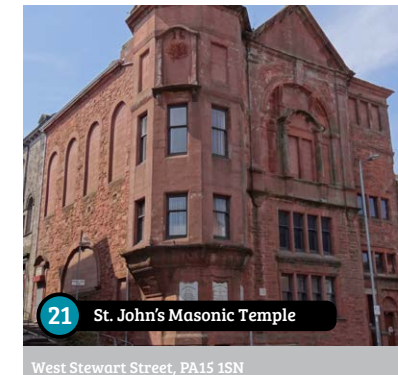
**17 St. John's Episcopal Church**

Union Street, PA16 8JJ  
Scottish Episcopal -1878 Paley & Austin. Gothic Revival tower with pyramidal roof on north east corner. Four bay nave with clerestory. Rood screen designed by H. O. Tarbolton. Font is copy of 15th century font in Suffolk. [www.stjohnsgreenock.co.uk](http://www.stjohnsgreenock.co.uk)



**19 Struthers Memorial Church**

West Stewart Street, PA15 1SH  
Independent Evangelical Christian Fellowship -1896 J.B. Stewart. Sandstone with Gothicised mouldings -formerly Reformed Presbyterian Church. Founded 1950s by Rev Hugh Black. Named after Rev J.P. Struthers, minister and Christian author. Fellowship has several churches throughout Scotland. [www.struthers-church.org](http://www.struthers-church.org)



**21 St. John's Masonic Temple**

West Stewart Street, PA15 1SN  
Masonic Lodge - 1897 Boston Menzies and Morton Red sandstone (Skelmorlie quarry) building. Tablet outside commemorates laying of foundation stone. Past members' portraits inside. Interior has remained unchanged over the years. Lodge Greenock St. John's No 175 meets regularly here. Enter by Bubbly Jock Brae.



**22 Cruden Gospel Hall**

Ann Street, PA15 4RQ  
Previously Gospel Hall - 1888 architect unknown. Public Hall, capacity 300. Has been dance hall (late 19th century), cinema (1911-1930) and a Gospel Hall (1950s-1970s). Currently a venue for weddings and other private functions. [www.crudenhall.co.uk](http://www.crudenhall.co.uk)



**24 Greenock Town Hall**

Clyde Square, PA15 1LY  
1879-1886 H. & D. Barclay. Used as a church when required, particularly for large celebratory or commemorative services. Part of Municipal Buildings. Three small towers and the Victoria Tower (245 feet high). Town Hall, seats 1000 on three levels and occupies ground floor.



# Greenock InSpires

## CHURCH TRAIL

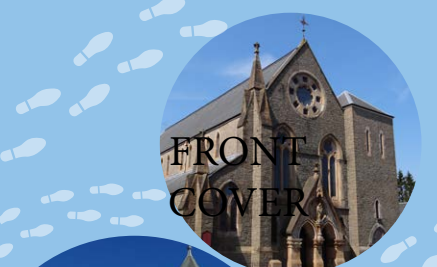
A CELEBRATION OF CHURCH HISTORY,  
HERITAGE AND PEOPLE

# Greenock InSpires

## CHURCH TRAIL

A CELEBRATION OF CHURCH HISTORY,  
HERITAGE AND PEOPLE

This is a self guided heritage walking trail of churches of central Greenock. It is not totally comprehensive. Some of the buildings may be open to the public. More information about each building can be found on its website. Further information on buildings etc. is available from the drop down menu 'What's in Inverclyde' at [www.inverclydetouristgroup.co.uk](http://www.inverclydetouristgroup.co.uk)



**1** St. Columba's Gaelic Church

28, Grey Place, PA16 1SH  
Now H.G.Pyper Furniture.  
Gaelic Free Church -1823 James Dempster of Greenock. Gate piers of Greek Thomson fashion.



**3** Lyle Kirk - Esplanade Building

The Esplanade, PA16 8AN

Church of Scotland - formerly Old West Kirk. Originally built off Container Way in 1591. Funded by John Schaw. Important as it is the first Protestant church built in Scotland after the Reformation. Notable collection of Pre-Raphaelite stained glass windows.

Moved stone by stone to Esplanade in 1925 when Harland and Wolff needed to purchase a yard on the Clyde. Graves also relocated and the remains of family members of James Watt and Highland Mary were respectfully carried and interred in the Cemetery in South Street. [www.lylekirk.org](http://www.lylekirk.org)

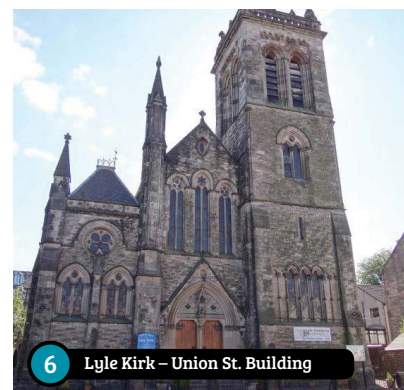
Continue west along the Esplanade and then turn left into Bentinck Street. Building 4 is at the junction of Bentinck Street and Newark Street.

Walk east along Newark Street which becomes Union Street. Building 5 is at the junction of Union Street and Fox Street.



**4** Lyle Kirk - Newark St. Building

Newark Street, PA16 8AN  
Church of Scotland -1894 Robert Rowand Anderson (also designed Mount Stuart, Rothesay). Built in 'perpendicular style'. Paid for by public benefactors including Caird (shipbuilders). [www.lylekirk.org](http://www.lylekirk.org)



**6** Lyle Kirk - Union St. Building

Union Street, PA16 8DD  
Church of Scotland - 1871 (redesigned 1951) J. Starforth. One large stained glass window (smaller ones also). Carvings of the 'Devil' being chased out by the 'Good', above main entrance. Built at cost of £779. [www.lylekirk.org](http://www.lylekirk.org)



**8** Greenock Methodist Church

4, Ardgowan Street, PA16 8SP  
Methodist - 1883, Manse added 1889. Simple Gothic Revival Building. Organ added 1905. Multipurpose hall, stained glass windows. John Wesley visited area 1772 and 1774. [www.methodistchurchinscotland.net](http://www.methodistchurchinscotland.net)



**10** Westburn Church

9, Nelson Street, PA15 1TP  
Church of Scotland -1841 as West Parish Church (roots traced to 1591). Previously known as West Church, Old Kirk and St. Luke's. Steeple added 1855 - Chancel added 1912. McCulloch's clock added 1865. [www.greenockwestburn.org.uk](http://www.greenockwestburn.org.uk)



**11** Orangefield Baptist Church

Orangefield, PA15 1YX  
Baptist - 1877 Thomas McLelland. Joined with George Square Baptist and has now moved to the former St. Andrew's Square building (East End) Now The Albany Arts Centre. [www.greenockbaptist.org](http://www.greenockbaptist.org) [www.thealbany.info](http://www.thealbany.info)



**13** The Mount Kirk

95, Dempster Street, PA15 4ED  
Church of Scotland - 1910. Red sandstone building. (Wee Red Kirk). Interior functional woodcarving with pulpit falls having an industrial theme. Present building is the former Mount Pleasant Free Church. [www.themountkirk.org.uk](http://www.themountkirk.org.uk)



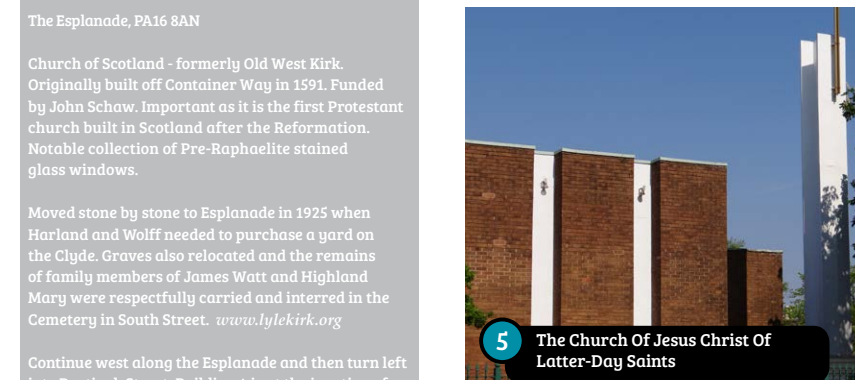
**14** St. George's North Church

George Square, PA15 1QP  
Former Church of Scotland -1870 Salmon Son & Ritchie. Joined with Martyrs & North Church 1983, merged with St. Luke's 2006. Large ashlar round arched Renaissance building with tall stone steeple with open crown top and channeled ground floor. Now furniture warehouse.



**2** St. Mary's Church

Patrick Street, PA16 8NA  
Roman Catholic - 1862 George Goldie. Early French Gothic style, tower incomplete. Renovated 2003. Oldest Catholic church in Greenock. Earlier sites 1808 rented Mission Hall, then East Shaw Street and Bearhope Street. 'Mother Parish' of whole Lower Clydeside. [www.stmarysgreenock.org](http://www.stmarysgreenock.org)



**5** The Church Of Jesus Christ Of Latter-Day Saints

22, Fox Street, PA16 8BS  
Mormon - late 1960s. Largest Latter-Day Saints' church in Scotland, being built over three floors. Greenock branch of Paisley Stake of Mormon Churches.



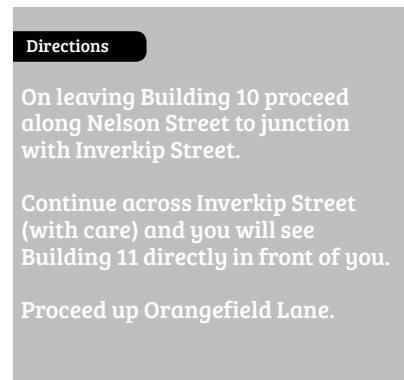
**7** Ardgowan Square Evangelical Church

25, Ardgowan Square, PA16 8NH  
Formerly United Free Church - 1930 Architect unknown. Small building, extended in 1998. See church website for details. [www.ardgowanchurch.org](http://www.ardgowanchurch.org)



**9** Cedar Hall, Church Of God

3-5, Ardgowan Street, PA16 8SP  
Church of God - Cedar Hall is noted as a place of Christian worship and religious service. Fellowship is the realisation in practical terms of the prayer of Jesus Christ for his followers that they may be one. [www.churchesofgod.info](http://www.churchesofgod.info)



**12** St. Patrick's Church

Orangefield Place, PA15 1YX  
Roman Catholic - 1924-25 Antonio Coia. Cost £21,000. In the war years the Women's Guild provided much needed support to the community. Church built to relieve congestion at St. Mary's Church, Patrick Street. [www.stpatricksgreenock.org](http://www.stpatricksgreenock.org)



**15** George Square Baptist Church

George Square, PA15 1QP  
Former Baptist Church -1888 James Sellars. Simple Renaissance style with squared rubble ionic pilasters at doorway with broken pediment. Joined with Orangefield Baptist Church 2008. Congregation worship at former St. Andrews Square UF Church - St. Andrew's Square Greenock. This building is now a dance studio.

### Directions

On leaving Building 10 proceed along Nelson Street to junction with Inverkip Street.

Continue across Inverkip Street (with care) and you will see Building 11 directly in front of you.

Proceed up Orangefield Lane.

### Directions

Leave Building 13 and turn right on to Murdieston Street, then right on to Dempster Street.

Walk east along Dempster Street to junction of Mount Pleasant Street. Turn left and go downhill as far as the West Rail Station.

Turn right into Inverkip Street and just after passing an old cemetery turn left into West Shaw Street.

At the junction of West Shaw Street and Nelson Street turn right along Nelson Street to George Square. Building 14 is on the corner.